



# Owner Instructions

Warning! Read instructions before using the machine



[www.numatic.com](http://www.numatic.com)



**PBT 230**

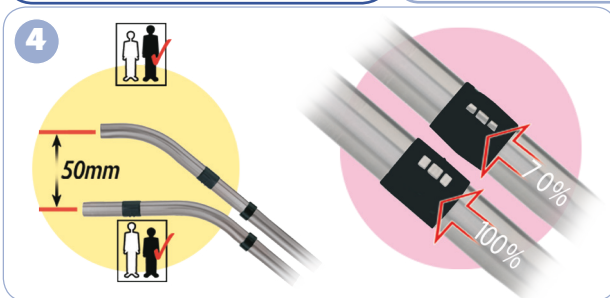
## Kit - AA29E 607391



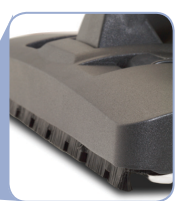
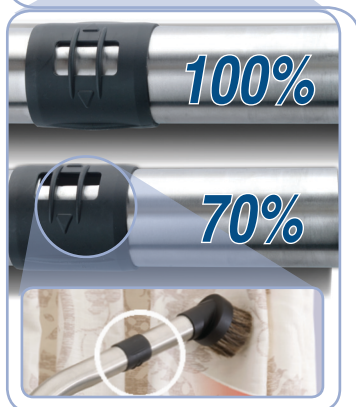
601141  
601142



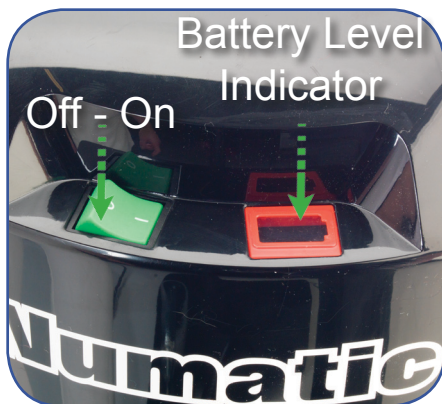
## Assembly



## Using the Machine







Suction  
1000 mm w.g.





## Using the Machine

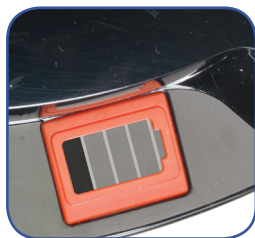




## Charging the machine



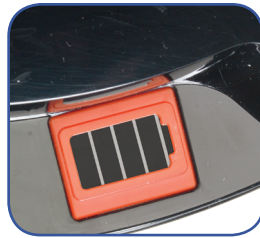
Cleaning time  
30 mins



=



=



Charge time  
3 1/2 hours MAX



## Rating Label

- 1 Voltage Frequency
- 2 Power rating
- 3 Weight (ready to use)
- 4 Company Name & Address
- 5 Machine Description
- 6 Machine yr/wk Serial number
- 7 WEEE Logo
- 8 CE Mark



**PPE** (personal protective equipment) That may be required for certain operations.



Ear Protection



Safety Footwear



Head Protection



Safety Gloves



Eye Protection



Protective Clothing



Dust / Allergens Protection



Hi Viz Jacket



Caution Floor Sign

**NOTE:** A risk assessment should be conducted to determine which PPE should be worn.

## Safety Critical Components

Multi-Regional Charger (100-240V ~ 50/60Hz)

Li-Po Battery 5.2Ah

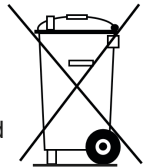
## WEEE Legislation

### (Waste, Electrical and Electronic Equipment)

Vacuum cleaner, accessories and packaging should be sorted for environmental-Friendly recycling.

(Only for EU Countries)

Do not dispose of vacuum cleaner into household waste! According to the European Directive 2002 / 96 / EC on waste electrical and electronic equipment and its incorporation into national law.



Vacuum cleaners that are no longer suitable for use must be separately collected and sent for recovery in an environmental-friendly manner.

Failure to rectify the problem or in the event of a breakdown contact your Numatic dealer or the Numatic Technical helpline +44 (0)1460 269268

### Daily:-

- Keep the machine clean, including hoses and tubes.
- Ensure the bag and filter are fitted.
- Regularly examine the charger.
- Check dust bag frequently.
- Check filters are clean.

### Weekly - as daily and:-

- Check for any worn or damaged parts and replace immediately.
- Do not steam clean or pressure wash.
- Do not place more than 2.5 Kg (MAX weight) into each caddy.
- Do not place liquid in the caddy, this is a dry use machine only.

### Batteries:-

- Always recharge the batteries after use.



## Information for DRY USE Vacuum cleaners



### WARNING

#### **Ensure you read the instruction manual before using the machine.**

Operators shall be adequately instructed on the use of these machines, as with all electrical equipment, care and attention must be exercised at all times during use, you must also make certain that routine and preventative maintenance is carried out periodically to ensure safe operation.

Failure to carry out maintenance as necessary, including the replacement of parts to the correct standard could render this equipment unsafe and the manufacturer can accept no responsibility in this respect.

#### **This machine is for DRY USE only.**

You must remove the battery from the machine BEFORE cleaning or maintenance and when replacing parts or converting the machine to another function.

This appliance is intended to be assembled, cleaned and maintained by an adult.

This machine is not suitable for the collection of biological hazards, hazardous or explosive dusts.

Contact your local distributor if you require a machine capable of performing these tasks.

The machine must not be used by persons with reduced physical, sensory or mental capabilities, or lack of experience or knowledge, unless they have been given supervision or instruction.

#### **This machine is not a toy; children shall not play with this machine.**



### CAUTION

This machine must not be stored outside, or used in wet environments, or to collect wet materials.

The vacuum cleaner should be stored in a dry place and is for indoor use only.

You must ensure that the filtration system fitted to the machine is suitable for the material being collected.

### NOTES

This product complies with the requirements of IEC 60335 - 2.69.

This machine is suitable for commercial use, for example in hotels, schools, hospitals, factories, shops and offices for other than normal housekeeping purposes.

If the vacuum cleaner stops working, remove the battery from the machine before investigating where the fault lies.

If the vacuum cleaner has a blockage, switch off, remove the battery from the appliance, and inspect the floor tool, wands and hose for debris. If the floor tool, wands and hose are clear, replace the dust bag and clean the filter.

This machine is equipped with a thermal cut-out to protect the motor and other vital machine parts from overheating.

Should the machine cut-out, it will automatically reset when cooled.

The vacuum cleaner should be inspected after use for damage.

The size and quality of the dust bag and filters affect the machine efficiency.

Use of non-original dust bags or non-original filters can cause restricted air flow which may lead to machine overload.



**DO**

- Keep your machine clean.
- Fully charge battery before first use.
- Keep filters clean.
- Use filter bags, they will enhance performance and help keep machine clean.
- Use a Numatic Original filter bag under fine dust conditions.
- Keep hoses and tubes clear.
- Replace any worn or damaged parts immediately.
- Change dust bag frequently.
- Keep diffuser filter (where fitted) clean.
- **Remove battery from machine when not in use.**



- Use to suck up hot ashes, lighted cigarette ends or flammable gases.
- Use to vacuum hazardous dust, if you require a machine capable of performing this task, contact your local distributor.
- Use steam cleaners, pressure washers or immerse in water to clean the machine.
- Attempt machine maintenance or cleaning unless the battery has been removed from the supply outlet.
- Use in a wet environment or to collect wet materials.
- Store your machine in wet conditions.

## Important Warnings – Batteries

**Read all the warnings before using the battery.**

- The battery is equipped with electronic thermal protection, refer to the **Temperature Range Table** below for recommended operating conditions.
- Do not store batteries along with metal objects due to risk of short circuit.
- This cleaner uses Numatic Lithium Polymer (Li-Po) batteries. Used batteries should be disposed of safely and placed in a sealed plastic bag and then handled according to all locally approved precautions and environmental regulations.
- Do not crush.
- Do not dismantle.
- Do not heat or incinerate the batteries.
- Do not short-circuit the batteries.
- Do not immerse in any liquid.
- Do not charge below 0°C.
- Do not charge damaged batteries.
- Use only original NUMATIC batteries, when replacement batteries are required.
- If the batteries are leaking, return batteries to a disposal plant or a similar local facility.
- The batteries must be removed from the appliance before the appliance is scrapped.
- The battery is to be disposed of safely and in accordance with all locally approved precautions and environmental regulations.

### Temperature Range Table

|             |          |
|-------------|----------|
| Charging    | 5°C~40°C |
| Discharging | 5°C~45°C |
| Storage     |          |
| < 1 month   | 5°C~40°C |
| < 6 months  | 5°C~35°C |



Caution



Do not immerse or  
allow to get wet



Do not incinerate



Do not place more than 2.5 Kg (MAX weight) into each caddy.



Do not place liquid in the caddy, this is a dry use machine only.

If the battery is found to be faulty at any time,  
contact Numatic International, or your supplier  
for information on disposal.



## Important Warnings – Charger

**Read all these warnings before using the charger.**

- **CAUTION!** Charge only Numatic Lithium Polymer (Li-Po) batteries, other types of batteries may burst causing personal injury and damage.
- Check the mains cord regularly for any sign of damage.
- Do not use damaged devices.
- If the mains cord of the charger is damaged, it must be replaced by an original NUMATIC INTERNATIONAL cord available from the manufacturer or service agent.
- Protect the charger against moisture and store it in a dry place.
- Do not use the charger if it is wet.
- Do not charge below 0°C.
- The mains voltage available must correspond to the voltage stated on the rating plate of the charger.
- Do not operate charger in explosive environment.
- Do not carry the charger by holding the mains cord.
- Do not handle the electrical cord or plug, with wet hands.
- Do not unplug by pulling on cord. To unplug, grasp the plug, not the cord.
- Do not cover the charger.
- Do not open the charger. Repairs shall be done only by authorised personnel.
- Do not charge damaged batteries.
- Do only charge dry batteries.
- Do not charge non-rechargeable batteries in this charger.
- The appliance is not intended for use by children or infirmed persons without supervision.

## Instructions for Use – Charging Batteries

The charger is intended for use only on flat surfaces, place horizontally on floor or work surface. The charger is intended for use with the detachable power cord supplied, the power unit is capable of operating at different voltages without user adjustment. If the charger is damaged or does not charge anymore, please return to service centre.

### ***Charging Procedure:***

1. Ensure the battery is fully inserted into the charger.
2. Fit the mains power cord to charger and suitable power supply.
3. The LED should show RED to indicate charging.
4. Once fully charged the LED will show GREEN.
5. If power is supplied to the charger with no battery fitted the LED will show GREEN to indicate STAND-BY status.

## Hazards

### ***Health Hazards (Acute & Chronic).***

The chemicals used in the battery are in a sealed container.  
Risk of exposure only occurs if the battery is abused or damaged.  
Contact of electrolyte and lithium with skin and eyes should be avoided.

### ***Signs & Symptoms of Exposure.***

A damaged or leaking battery can cause chemical burns upon contact.

## First Aid Measures

If exposed to any of the Chemicals mentioned in the Hazards section please follow the procedures below:

### **Eyes.**

Flush eyes with plenty of water for at least 15 minutes, occasionally lifting the upper and lower eyelid.

Seek medical attention.

### **Skin.**

Remove contaminated clothing and rinse skin with plenty of water or shower for 15 minutes.

Seek medical attention.

### **Inhalation.**

Vacate from site of exposure to fresh air immediately. Use oxygen if available.

### **Ingestion.**

Give at least two glasses of milk or water. Induce vomiting unless patient is unconscious.

Seek medical attention.

### **Note:**

Inhalation, skin contact and eye contact are possible if the battery is damaged.

Exposure to internal contents, the corrosive fumes will be very irritating to skin, eyes and mucous membranes.

Overexposure can cause symptoms of non-fibroid lung injury and membrane irritation.

**Good Batteries... Good Chargers...  
Good Care will ensure Good Results.**

## NPT / PPT Extra Caddy Kit

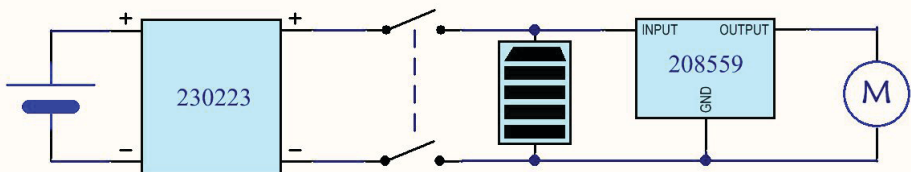


607233  
Red Caddy



607222  
Blue Caddy

## Schematic Diagram



DRW-12137 08/11/12 (A01)

## Data

| Power                                      | Motor       | Airflow  | Suction                                           |
|--------------------------------------------|-------------|----------|---------------------------------------------------|
| 36v (DC)                                   | 250W        | 20 L/s   | 1000 mm w.g                                       |
| Size                                       | Capacity    | Weight   | Sound Pressure                                    |
| Width 355mm<br>Depth 355mm<br>Height 615mm | 8L          | 8.94 Kg  | 67 db (A)<br>(IEC 60704-2-1)<br>Uncertainty 0.2dB |
| Run Time                                   | Charge Time | Dust Bag | PBT 230                                           |
| 30 mins                                    | 3.5 hours   | NVM -1CH |                                                   |

## Spare Parts

|        |                                 |
|--------|---------------------------------|
| 604506 | Lithium Polymer (Li-Po) battery |
| 604500 | Charger Dock UK                 |
| 604501 | Charger Dock European           |
| 604502 | Charger Dock Swiss              |
| 604503 | Charger Dock Australian         |
| 604504 | Charger Dock South Africa       |
| 604505 | Charger Dock USA                |
| 236170 | Charger Cable UK                |
| 236171 | Charger Cable European          |
| 236172 | Charger Cable Swiss             |
| 236173 | Charger Cable Australian        |
| 236174 | Charger Cable South Africa      |
| 236175 | Charger Cable USA               |
| 604105 | NVM - 1CH HepaFlo Dust bag      |
| 604168 | TriTex Filter                   |

### Lithium Polymer Battery Warranty.

Numatic International will guarantee your Numatic Lithium Polymer battery for 550 recharging cycles, providing the cycles have been carried out to the manufacturer's specifications and requirements.

Failure to use the correct Numatic charger will void your warranty.





# Numatic International Warranty

Numatic International Limited warrant to the original purchaser that its products are free of defects in both material or workmanship for the period shown below:-

|                                                      |                     |
|------------------------------------------------------|---------------------|
| Homecare and Cleancare Vacuum cleaners.....          | 2 Years             |
| Rotary Floor Machines.....                           | 2 Years             |
| Twintec Auto Scrubber Dryer.....                     | 1 Year              |
| Vario Ride-On Scrubber Dryer.....                    | 1 Year / 1500 hours |
| Mopping, Compacts, Combi and Servocare Products..... | 1 Year              |
| Individual Accessories and Spare Parts.....          | 6 Months            |

Note: This warranty expressly excludes consumable parts such as carbon brushes, floor brushes, mops, batteries etc, that are considered replaceable from time to time during the normal working life of the machine.

- A. The warranty period commences from the date the goods are purchased.
- B. All warranty claims must be processed through the Dealer from whom the equipment was purchased. The Dealer will co-operate with the purchaser throughout the warranty claims procedure and will arrange any necessary repairs using genuine Numatic parts.
- C. If the original Dealer is no longer able to fulfil his obligations please contact Numatic International Limited with full details of the claim and proof of purchase so that this may be processed without delay.
- D. Any warranty claim can only relate to the specific part that is proven to be at fault and for which a replacement will be supplied but cannot be extended to constitute a claim against the complete machine.
- E. Numatic International will supply the Dealer with any warranty parts required, subject to the claim being validated, after return of the faulty items in accordance with Numatic International Limited's General Conditions of Sale.
- F. Claims will not be accepted if they are the result of fair wear and tear, misuse or abuse of any kind.
- G. No replacement will be given unless the appropriate evidence of the validity of the claim has been provided to the satisfaction of Numatic International Limited.
- H. Numatic International Limited reserve the right to charge for any unnecessary work carried out as a result of an invalid claim.
- I. No variation to this warranty may be made or implied by any member of Numatic International Limited or its Dealers unless such variation is in writing and authorised by the Company



Numatic International Limited, Chard, Somerset, TA20 2GB  
Telephone: 01480 68600 Fax: 01480 68458  
© Numatic International Limited

**EU DECLARATION  
OF  
CONFORMITY**

We hereby declare under our sole responsibility that the following equipment fulfils all the relevant provisions of the following EU Directives:

Machinery Directive 2006/42/EC

EMC Directive 2004/108/EC

RoHS Directive 2011/65/EU

**Machine Description:** Vacuum Cleaner  
**Type:** RSB 140, NBV 190, PBT 230 series

**Manufactured by:** Numatic International Limited

Relevant standards upon which conformity is declared include:

IEC60335-1:2010

IEC60335-2-2:2009

IEC60335-2-29 +A1 2002 + A2 2004

IEC60335-2-69:2002 +A1:2004 +A2:2007

EN 55014-1:2006

EN 55014-2:2006

EN 62233:2008

A technical construction file for this equipment is retained at the manufacturer's address under the authorisation of the following signatory:

**Name:** Allyn Boyes

**Position:** Technical Manager

**Signed:**

**Date:** 01 /01/2013



Numatic International Limited,  
Chard, Somerset.  
TA20 2GB  
[www.numatic.co.uk](http://www.numatic.co.uk)

**GB**

# PBT 230



Distributed by:-



Numatic International Limited, Chard, Somerset,  
TA20 2GB, ENGLAND.  
Telephone 01460 68600  
Fax: 01460 68458

[www.numatic.co.uk](http://www.numatic.co.uk)

Specification subject to change without prior notice. [www.numatic.com](http://www.numatic.com)

244138 03/13 (A04)